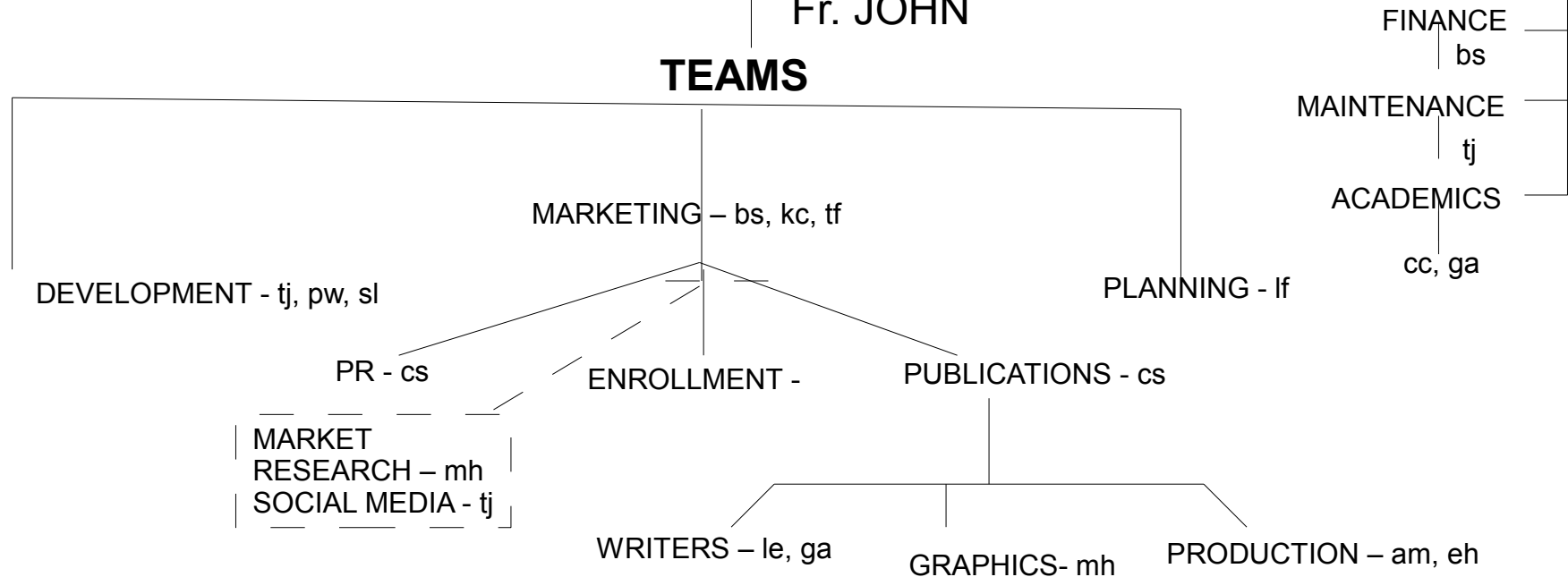


SCHOOL COMMISSION 2011-12

EXEC COMMITTEE (EC)

CHAIR – tj
 VICE-CHAIR – kc – SC Rep Pastoral Council
 CHAIR-ELECT – lf - By-Laws
 SECRETARY – cs
 CFO – bs - SC Parish Finance Comm Rep
 ADMINISTRATOR - ke
 Fr. JOHN

TEAMS



KEY – tj-Tim Janis, kc-Keith Clark, lf-Lisa Fears, cs-Catherine Shergi, ke-Kelly England, bs-Bill Shomaker, pw-Patty Whitaker, cc-Colleen Coleman, le-Lori Erickson, mh-Megan Henry, am-Abby McElwain, ga-Gloria Adams, eh – Erik Heinrich, tf-Ted Fries, sl-Shelly Linton